



POTAWATOMI TIMES

Gsenyaniyêk êzhewébêk — Forest County Potawatomi Happenings



Volume 31, Issue 4 • August 15, 2025 • minké gizes • Blueberry Picking Moon • FREE

Korean Exchange Week



Everyone getting a taste of the ethnic food that was made

by Val Niehaus

The Potawatomi Community Center (PCC) hosted the 6th Annual Cultural Exchange Week from July 22 to 24, 2025. This event showcased how two diverse communities can come together through shared heritage and hospitality.

The Native American Cultural Exchange Fellowship organized the program which brings Korean American visitors to tribal reservations across Wisconsin, including the Forest County Potawatomi, Mohican, Menominee, and Ho-Chunk. Many of the visitors are immigrants to the U.S. and spend about a week engaging in cultural sharing, mutual understanding, and relationship building.

On July 23, 2025, PCC hosted a shared meal followed by evening performances. The FCP community organized a mini powwow, highlighting various dances and the stories

behind them. Our guests contributed their talents, sharing traditional calligraphy, orchestral pieces, and music. Potawatomi and Korean participants also led discussions.

Participants engaged in deep conversations throughout the week, formed emotional connections, and shared stories over meals. Many formed meaningful bonds, with one visitor affectionately referring to a Potawatomi participant as "auntie."

A significant aspect of this week was the shared histories of loss and resilience. Korean visitors reflected on the colonial oppression of their homeland, including the erasure of language and culture under Japanese rule, which parallels the experiences of many Native communities in the U.S.

The Korean Potawatomi Cultural Exchange demonstrates the power of cross-cultural connection through music, food, dialogue, and mutual understanding. It fosters empathy and friendship, which is particularly meaningful given both communities' cultural suppression and recovery histories. These events create lasting bonds and contribute to a more inclusive understanding for future generations. We at FCP look forward to what next year's Cultural Exchange will bring, and we can't wait to reconnect with old friends.



A gift of calligraphy to the FCP community - translation: "Let's love our neighbor together"



FCP Royalty representing



The youth loved the "fish waffle cakes"

FIRST CLASS MAIL
U.S. Postage Paid
Permit No. 203
Eau Claire, WI



OBITUARY

Debra Ann Danielson

Debra Ann Danielson, age 67, of Wabeno, Wis., passed away unexpectedly with her family by her side on July 27, 2025, at her home.

Debra was born on Sept. 27, 1957, in Laona, Wis., to Floyd Wamego and Mildred Engels. She was united in marriage to Douglas Danielson, who survives her.

Debra was a woman of deep love and unwavering strength. She cherished her family above all and was especially proud of her grandchildren's education and accomplishments. Her home was filled with warmth, laughter, and often, the joyful presence of her beloved dogs.

A source of strength and inspiration, Debra took great pride in her sobriety and lived each day with grace, resilience, and compassion. Her legacy of love, perseverance, and faith will continue to live on through all who knew her.

She is survived by her loving husband, Douglas Danielson; daughter, Donna Whitefish; son, John Danielson; grandchildren, Ethan Whitefish, Kawhi Davis, Dayton Olinger, Destiny Whitefish, Elaina Cortbine, Mackenzine Danielson, Jonathan Danielson, and Jaden Danielson; and great-grand-



children, Lena Olinger, Sage Olinger, and Malia Olinger.

Debra is also survived by her sisters, Flossy St. Clair, Denise Huettl, Tina (Tom) Leonard, Pam Daniels, Susie Wakeman, and Sylvia (Harold) Moss; and brothers, Dean (Eunice) Whitefish and David Engels.

She was preceded in death by her parents, Floyd Wamego and Mildred Engels; her brothers, Orville Whitefish, Arlen Wamego, Peter Engels Jr. and her sister, Annette Whitefish.

A visitation was held on, July 30, 2025, at Sunnyside Community Church in Carter, Wis., Pastor Ben Larson officiated.

Debra will be dearly missed and forever remembered for the love she gave so freely and the strength she showed so courageously.

FCP Up & Coming

by Amber Haseman

ATV Safety: Join LNR for their two-day ATV Safety Course on August 18-19 from 2 to 5 p.m. at FCP Land & Natural Resources. The course is open to everyone ages 12+. You must attend both days to receive your certificate. Register at gowild.wi.gov or call Tyler Lorenz at (715) 478-4507. Make sure to have your WI DNR customer ID number ready.

Farm to Table: Join Food Preservationist Wenona Siggelkow on August 19 or 21 at Bodwewadmi Ktëgan, where you'll learn how to prepare a nutritious meal. The featured meal is turkey skillet and biscuits. The classes are limited to 10 participants and are free of charge for FCP tribal members and \$25 for non-tribal members. Cash payment only is accepted on the day of the event. Kids are welcome, and activities will be provided during class. Registration is required. For more information or to register, contact Trisha Thorbahn at (715) 478-4162 or trishar.thorbahn@fcp-nsn.gov.

Elders Fishing Trip: FCP Elders are invited to join FCP Elder Services for a fishing trip on Boom Lake in Rhinelander, Wis. Two dates are available: August 20 or September 2. A Wisconsin fishing license is required. The trip will last two hours, and the boat leaves the dock at 10 a.m. There are only 10 spots available, two of which are wheelchair accessible. Limited transportation is available. To sign up or for more information, call Jenna Paradies at (715) 478-4892.

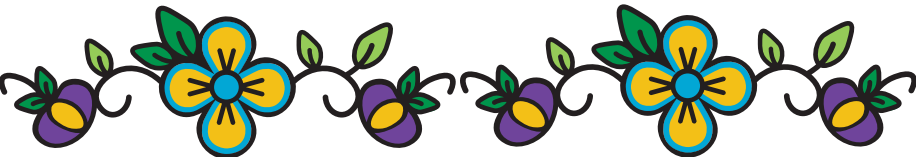
Meno Keno Ma Ga Wen Powwow: The annual Meno Keno Ma Ga Wen Powwow – Home of the Woodland World Championship is scheduled for August 22-24. Grand entries are August 22 at 7 p.m., August 23 at 1 p.m. and 7 p.m.,

and August 24 at noon. There will be meals throughout the weekend, Woodland championship specials, committee specials, singing contests, dancer honorariums, and a royalty contest.

Hunter's Safety: Join LNR for their three-day Hunter's Safety course on August 25-27 from 2 to 5:30 p.m. The course is open to everyone ages 12+. You must attend all three days to receive your certificate. Register at gowild.wi.gov or call Tyler Lorenz at (715) 478-4507. Be sure to have your WI DNR customer ID number ready.

Pontoon Ride for Elders: The last opportunity to join FCP Elder Services for a pontoon ride on Boom Lake in Rhinelander is August 26. There are only 10 spots available, two of which are wheelchair accessible. The boat ride lasts two hours and leaves the dock at 10 a.m. Please be sure to arrive 30 minutes prior. If you'd like to register, call Jenna Paradies at (715) 478-4892.

We All Come Together Just Like They Did Long Ago: The second annual We All Come Together Just Like They Did Long Ago event has been rescheduled for September 13 from 12 to 6 p.m. at the Devil's Lake canoe launch. Everyone is welcome to join for the uniting of three fires, welcoming canoe builders from Ojibwe, Odawa, and Bodwewadmi to celebrate their ancestors' journey to where food grows on water. Bring your birch bark canoes, hand drums, and families to the Wigwas Thiman Gathering. There will be prizes for best dress, ribbon shirt/dress, vest/Yoak, moccasins, medallion, hat/turban, earrings, hair attire, and bandler bag. There will also be a variety of contests in different categories. Contact Lawrence Mann at (715) 889-9816 for more information.





POTAWATOMI TIMES

5442 Everybody's Road • PO Box 340 • Crandon, WI 54520
(715) 478-7437 • times@fcp-nsn.gov • www.fcpotawatomi.com

Deadline for the September 1, 2025, issue of the PT is Wednesday, August 20, 2025.



FCP EXECUTIVE COUNCIL

Chairman: BROOKS BOYD SR.

Vice Chairman: KEN GEORGE JR.

Secretary: ALEXANDRIA MCCORKLE

Treasurer: JOSEPH DANIELS SR.

Council Members: DESTINEE ALLOWAY, HERB DANIELS JR.

POTAWATOMI TIMES STAFF

Interim Managing Editor: KRYSTAL STATEZNY

Writers/Photographers: VAL NIEHAUS & AMBER HASEMAN

Potawatomi Times (PT) is a twice-monthly publication of the Forest County Potawatomi Community. Editorials and articles appearing in the PT are the responsibility of the authors and do not necessarily reflect the opinion or attitude of the PT staff or the FCP Community. PT encourages the submission of "Letters to the Editor". All letters must include the signature, address and telephone number of the author. Letters are subject to editing for grammar, length, malicious and libelous content. The PT reserves the right to reject any advertising, materials or letters submitted for publication. The submission of articles, poetry, artwork and photos is encouraged. The Editor makes the sole decision of what is published in the PT and will not assume any responsibility for unsolicited material nor will the PT guarantee publication upon submission. PT will not guarantee publication of materials submitted past deadlines posted in the PT. No part of this publication may be reproduced without the written consent of the Editor.





SPECIAL GENERAL COUNCIL MEETING

Saturday, August 16, 2025
POTAWATOMI COMMUNITY CENTER
5471 Thayék Éthë Dnëkmëgzëk Myéw • Crandon, Wisconsin
Meeting begins @ 1pm • TOPIC: Enrollment



Safety Fair



Community Health providing car seat checks



Tossing the life preserver for a chance to win a raffle prize



Guests visiting the Emergency Management team

by Amber Haseman

The annual Safety Fair, held July 24 from 12 to 3 p.m. at the Carter Powwow Grounds, welcomed community members and Forest County Potawatomi (FCP) staff for an afternoon dedicated to safety, awareness, and education.

Many FCP departments, including the Health & Wellness Center, Emergency Management, Land & Natural Resources, Potawatomi Community Center, and others, joined local first responders and emergency personnel to host a variety of informational and interactive booths, sharing safety resources for all ages.

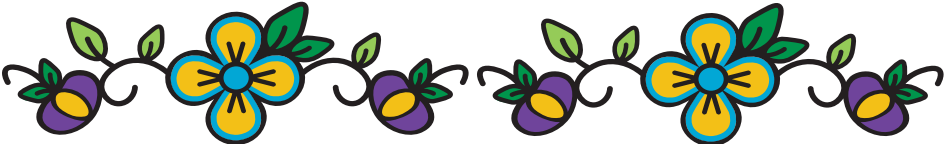
A special highlight of the day was the attendance of visitors from Korea, who were in town for the annual Korean Exchange event. Guests of all ages engaged with hands-on activities, explored community safety programs, and left with educational materials and safety resources.

Various activities were held throughout the day, including a safety challenge featured by the Potawatomi Community Center. Guests were

given three chances to toss the life preserver around a cone for a raffle ticket to win one of the three prizes. The Health Division offered bracelet crafting. Family Services informed the community of the Sokaogon Chippewa Law Enforcement's Scent Evidence K9 Cleo, which assists in finding missing persons using scent preservation technology. In light of this, visitors were given Human Scent Preservation Kits to keep at home if their loved one should ever go missing. Community Health also provided car seat inspections, with a chance to win a gift basket.

Attendees were also entered into summer-themed prize drawings, featuring items like a floating pad, beach wagon set, and inflatable dock. A complimentary lunch included brats, cold summer salads, fresh fruit, cookies, and beverages.

It was a beautiful summer afternoon filled with learning, awareness, and connection – a powerful reminder of the importance of community and collective well-being.



Advanced Finger Weaving

by Val Niehaus

An advanced finger weaving class was held on July 22-23, 2025, at the FCP Cultural Center, Library & Museum. This class was taught by Richard Gougé III, an experienced finger weaver.

Finger weaving is a traditional textile technique used to create flat, decorative bands or sashes without the use of a loom. It is often associated with Indigenous cultures of North America, which use it to make items such as belts, sashes, or straps. In this class, participants focused on weaving the chevron pattern. Here are the steps involved:

1. Preparation:

- Cut your strands: Depending on your pattern, you'll need multiple strands of yarn, often in even numbers.
- Tie the top ends together and attach them to a fixed point (e.g., doorknob or your own belt).
- Let the loose ends hang down freely. The yarns are not attached at the bottom during weaving.

2. Understanding the Structure:

- In finger weaving, warp and weft are the same strands. You manipulate strands to pass through others, so the fabric forms through the interlacing of

the same threads.

- The technique creates a chevron or diagonal pattern naturally.

3. Weaving Action:

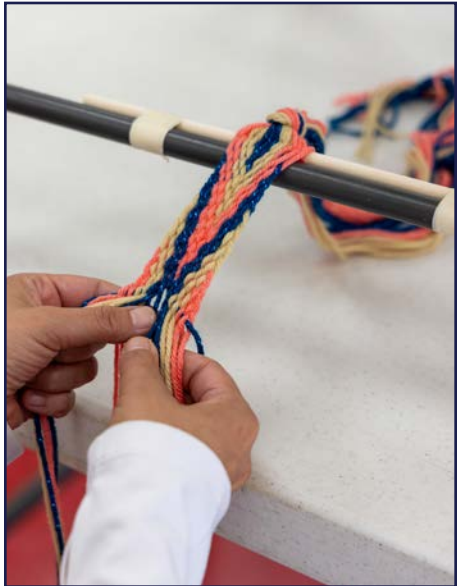
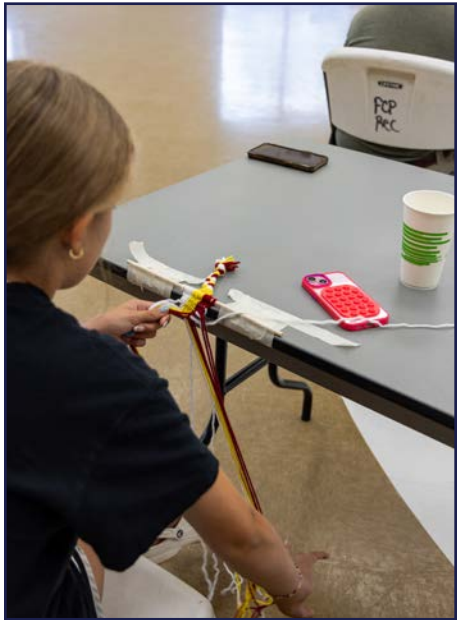
- Divide the strands into two layers: an upper layer (shed) and a lower layer.
- Pick up one strand (often from the edge) and weave it through the layers, over and under alternately.
- Once that strand reaches the other side, it becomes part of that side's layer.
- Repeat the process with the next edge strand.
- As you continue, the woven portion builds up at the top, and the rest of the yarn stays hanging.

4. Tension and Pattern:

- Keep even tension to ensure a flat, smooth weave.
- You can change color positions and strand counts to make different patterns (e.g., lightning, arrowheads, chevrons).

5. Finishing:

- When you reach your desired length, tie off the ends to prevent unraveling.
- Fringe or braid the loose ends for decoration.



FCP's Collaboration with U.S. DOT

by Krystal Statezny

Most people do not enjoy construction. The detours and extra time added to a daily commute is annoying and it seems like it will never end. The construction project of the U.S. Highway 8 Re-Grade project in Crandon, Wis., that began in April 2025, demonstrates that point. However, the result will be well worth the wait when it is completed in early November 2025.

As the state of Wisconsin scheduled the re-grading project, Forest County Potawatomi (FCP) was also meticulously planning another project that would benefit many. The Pathway to Wellness (PTW) trail will be a 4.8-mile long walking and biking pathway that begins in Prospect Ave. in Crandon and ends at Otter Creek Rd., at the entrance to the Otter Springs Recreation Area. The project also includes the Stone Lake Pathway — a 0.56-mile connection within the FCP Stone Lake Government complex. In the Stone Lake Area, the Stone Lake ATV Trail will run between Indian Dr. and Fire Keeper Rd. to divert existing ATV traffic away from the PTW. The tribe wanted to align the highway construction along with the trail creation to be more cost-effective and efficient as possible.

The PTW trail will also accommodate the U.S. Highway 8 East Tunnel crossing near the intersection at Kwe Da Kik Ln. The East Tunnel plays a vital role in the larger vision of the project by connecting the residents in the southern Stone Lake neighborhood to the Potawatomi Community Center, as well as commercial and government services. Half of the tunnel will be dedicated to motorized traffic, such as ATV/UTV's, and the other half will be for non-motorized traffic such as for biking and walking. The tunnel can also be used at night since there will be lights and security cameras, ensuring the safety of all.

Planning for this project began more than 10 years ago and has been a collaborative effort between the Forest County Potawatomi Tribe, the



The groups from FCP Capital Projects, Integrity Grading & Excavating, and Wisconsin Transportation Builders Association give Rep. Mursau a tour of the construction site

Wisconsin Department of Transportation, FHWA, USDOT, and the Bureau of Indian Affairs. Many meetings, feasibility studies and discussions have occurred with all involved to get where they are today.

The Pathway to Wellness is being developed in phases that include:

Phase 1 - Firekeeper Rd. to Love Knot Ln.

Phase 2 - Love Knot Ln. to Otter Creek Rd.

Phase 3 - Firekeeper Rd. to the Wolf River State Trail in Crandon

Currently, Phase 1 and 2 are being constructed along with the safety and roadway improvements on U.S. Highway 8.

PTW will greatly increase the health and quality of life of the residents of Forest County, while encouraging active transport, and creating new opportunities for exercise through the linkages to the Otter Springs Recreation Area. The ATV Trail will additionally connect to a regional network of ATV trails which will enhance overall ATV access in Forest County.



A view of the new East Tunnel that's being constructed

These new connections will strengthen the economic and transportation resilience of Forest County, as well as stimulate new tourism to Forest County and the region as a whole. Together, the proposed connections will reduce the reliance on vehicle travel, increase health and wellbeing, and will strengthen the economy for Forest County and the communities that rely on the City of Crandon for essential services.

The project was driven by:

1. Improving access and safety.

Currently, there is no safe walking access to connect individuals to facilities and/or homes located north or south of the U.S. Highway 8 corridor.

2. To create multi-modal community connection points.

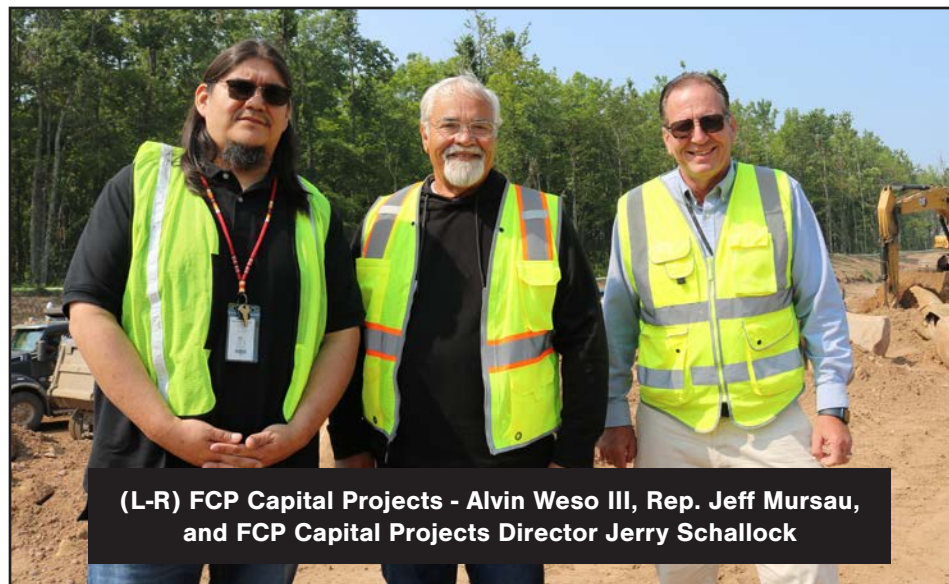
Being able to use different modes of transportation, other than vehicles, to get to locations in the community.

To learn about the partnerships between FCP and the Wisconsin DOT, Rep. Jeff Mursau (R-Crivitz) visited the construction site on July 31, 2025, to see first-hand the work being done on both the highway and PTW projects. Rep. Mursau recently

voted in favor of Wisconsin's two-year state budget, which supports major investments in roads, including rural areas. He is the Chair of the Assembly Committee on Forestry, Parks and Outdoor Recreation and the Special Committee on State-Tribal Relations.

Integrity Grading & Excavating Project Planner Rebecca Woller and Elise Nelson from Wisconsin Transportation Builders Association explained the Hwy. 8 construction project with highlights and challenges they faced to Rep. Mursau. FCP Capital Projects Director Jerry Schallock and his co-workers FCP Planner Michelle Berdan and Alvin Weso III, joined the tour given to Rep. Mursau of the site and explained the scope of the PTW project. He was all in favor of the project's goal of granting more access to more locations to local residents in a safe manner.

A grand opening will be held when the PTW, trails, and highway projects are complete. More information to come at a later date.



(L-R) FCP Capital Projects - Alvin Weso III, Rep. Jeff Mursau, and FCP Capital Projects Director Jerry Schallock

GRAND ENTRY
Friday 7 PM
Saturday 1 PM & 7 PM
Sunday 12 PM

MEALS
Friday Lite Meal - 8 PM
Saturday Breakfast - 8 AM
Saturday Feast - 5 PM
Sunday Breakfast - 8 AM
Sunday Lite Travel Meal - 5 PM

MC
Dylan Prescott

CO-MC
Michael Medawis

ARENA DIRECTOR
Ron GoodEagle

HOST DRUM
Little Solider Mayetta, KS

CO-HOST DRUM
Red Wiilow

LOCAL CO-HOST DRUM
Fire Nation

INVITED DRUM
Ribbon Town

DRUM JUDGE
"Sugar"
Shane Webster

HEAD MALE DANCER
Ira Frank

HEAD FEMALE DANCER
Penelope Peters

HEAD VETERAN
JR Holmes



FOREST COUNTY
POTAWATOMI
Keeper of the Fire



MENO KENO MA GE WEN POWWOW

Home of the Woodland World Championship



AUGUST 22-24, 2025

KA KĒW SĒ GATHERING GROUNDS

3912 FERRY RANCH LN / WABENO, WI 54566

Open to the Public

WOODLAND CHAMPIONSHIP SPECIAL
Platinum
Men & Women (65+):
1st - \$3,500, 2nd - \$3,000,
3rd - \$2,500, 4th - \$2,000
Golden
Men & Women (55-64):
1st - \$3,500, 2nd - \$3,000,
3rd - \$2,500, 4th - \$2,000
Sr. Adults
Men & Women (35-54):
1st - \$3,500, 2nd - \$3,000,
3rd - \$2,500, 4th - \$2,000
Jr. Adults
Men & Women (18-34):
1st - \$3,000, 2nd - \$2,500,
3rd - \$2,000, 4th - \$1,500
Teens
Girls & Boys (13-17):
1st - \$1,200, 2nd - \$1,000,
3rd - \$800, 4th - \$600
Juniors
Girls & Boys (6-12):
1st - \$500, 2nd - \$400,
3rd - \$300, 4th - \$200

COMMITTEE SPECIALS
Old Style Fancy Shawl
(18+): 1st - \$1,200, 2nd - \$1,000,
3rd - \$800, 4th - \$600
Men's Traditional - Bustle Only
1st - \$1,200, 2nd - \$1,000,
3rd - \$800, 4th - \$600
Chicken Dance
1st - \$1,200, 2nd - \$1,000,
3rd - \$800, 4th - \$600

SINGING CONTEST
1st - \$15,000, 2nd - \$12,000,
3rd - \$10,000,
4th - \$8,000, 5th - \$6,000

DANCER HONORARIUMS
MUST BE IN FULL REGALIA - GRAND ENTRY EACH SESSION

ROYALTY CONTEST
Friday, August 22
5 PM / ROYALTY CONTACT - RUTH: 715-889-1334

Potawatomi Ventures Acquires Lyons Electric



Milwaukee, Wis., July 29, 2025 – Potawatomi Ventures (PV) is pleased to announce the acquisition of Lyons Electric, a leading full-service commercial and industrial electrical contractor headquartered in Delafield, Wis. This strategic move marks a significant milestone for PV as it strengthens its Emerging Technologies group while advancing its com-

mitment to innovation, sustainability, and a diversified service portfolio. "We are very excited to welcome Lyons Electric to the Potawatomi Ventures family," said CEO of PV Kip Ritchie. "This acquisition aligns with our vision to expand and balance a diverse portfolio of service-based companies that strengthen our position and open new avenues for growth."

Founded in 1979, Lyons Electric has earned a stellar reputation for providing high-quality electrical construction, design/build services and ongoing operations and maintenance to commercial and industrial clients across Wisconsin. Their deep industry knowledge and strong leadership have made them a trusted partner in the energy space.

As part of the acquisition, Lyons Electric will operate under PV's Emerging Technologies Group, launched in 2023 to create a growth platform within the dynamic energy marketplace. Lyons Electric's President and Vice President of Operations will remain in their leadership roles, and daily operations will continue uninterrupted.

"Lyons Electric brings best-in-class capabilities, an entrepreneurial spirit, and a dedicated team to Potawatomi Ventures," said President of Lyons Electric Tim Cargill, "Together, we will enhance our service offerings, capture new synergies and build a more sustainable, opportunity-rich future for our communities."

PV is the economic development and income diversification arm of the

Forest County Potawatomi (FCP) community. With more than \$400 million in annual revenue, PV is one of Wisconsin's leading business entities and the state's third-largest minority-owned enterprise.

The acquisition of Lyons Electric is a key step in PV's long-term strategy to nurture new paths to shared prosperity, expand into energy and infrastructure and create workforce development opportunities in advanced electrical contracting.

Taureau Group advised PV in the transaction and legal counsel was provided by Godfrey & Kahn. Lyons Electric received legal counsel from Reinhart Boerner Van Deuren.

PV was established in 2002 as Potawatomi Business Development Corporation and is the economic development and income diversification business of the FCP community. Resources generated by PV and its holdings help diversify the tribal economy that supports FCP's economy and future generations of the tribe. PV is headquartered in Milwaukee, Wis., and is one of southeastern Wisconsin's top minority-owned businesses.



JFS Celebrates Woodale Crossing

Jewish Family Services (JFS) celebrated the opening of the Harry and Jeanette Weinberg Residences at Woodale Crossing with an event-filled afternoon and celebratory ribbon cutting. The new development adds affordable and supportive housing to the Brown Deer community and advances JFS' mission to strengthen the well-being of individuals and families through supportive services. The project was developed by JFS Housing, with funding support from Wisconsin Housing & Economic Development Authority (WHEDA), Bader Philanthropies, and other partners.

Greenfire managed the construction of the new building, along with the design team including JLA Architects and engineering services provided by The Sigma Group and REYN Engineering. Greenfire lead with experience in affordable and supportive housing projects ensuring high-quality, code-compliant construction. Greenfire worked closely with JFS and all project partners to deliver a space that is safe, accessible, and built to serve residents in need.

The ribbon cutting event included remarks from several community

leaders and project partners. Speakers included Interim President and CEO of JFS Daniel Fleischman, Gov. Tony Evers, Milwaukee County Executive David Crowley, President & CEO of WHEDA Elmer Moore, Director of Milwaukee County Health & Human Services (And Brown Deer native) Shakita LaGrant-McClain and President & CEO of Bader Philanthropies Dan Bader. The program also included a tree dedication in memory of Scott Lubner, who passed away in July 2025. Lubner served on the JFS Board of Directors, the JFS Housing Board, and the JFS Housing Task Force. He was instrumental in supporting the JFS mission and advancing its housing work. Remarks were given by Interim Chair and Past President Jason Steigman and Adam Witkov, honoring Scott's legacy of compassion, leadership, and service.

The event featured live music, food, beverages, and tours of the new facility. Woodale Crossing now opens its doors to residents and begins its role as a long-term resource for individuals and families in need of housing and support.



Pan Asia Officially Opened July 25, 2025



Pan Asia Supermarket officially opened its doors at the West Allis Towne Center with a ribbon cutting ceremony attended by City of West Allis officials, the Pan Asia team, and hundreds of excited shoppers.

Located at the corner of 70th Street and Greenfield Avenue, the project involved the renovation of a 36,000 SF former retailer – bringing the first Pan Asia location in the Upper Midwest. Greenfire managed the construc-

tion of the project, overseeing coordination with ownership and City officials navigating permitting and inspection requirements for the building's first grocery tenant. The scope of work included heavy mechanical, electrical, plumbing, and fire protection upgrades, along with extensive improvements to the building's exterior or envelope. Greenfire also constructed a new main entryway, cart corral, and completed new site landscaping. The project was designed by Madisen Maher Architects, with engineering support from Barber Engineering and IBC Engineering.

The supermarket offers an unmatched selection of Asian foods and prepared meals. Guests lined up by the building in anticipation of the grand opening, eager to experience the store's full range of offerings. Inside, shoppers

can find fresh sushi, a boba tea café, a bakery, and a hot food counter serving Chinese, Korean, and other Asian dishes. The store stocks fresh produce, meat, and seafood, and more than 10,000 grocery items sourced from across Asia — China, Vietnam, Korea, India, Japan, Thailand, Pakistan, and many others.

Pan Asia co-owners Ethan Lin and Hong Zheng welcomed patrons to the store, along with their friendly and knowledgeable staff which helped guide shoppers through the new store. The West Allis location is Pan Asia's sixth location, with more opening in the coming months. Greenfire's construction efforts introduces this full-service Asian grocery and dining destination to the West Allis community and the greater Milwaukee area.



2025 Potawatomi Gathering - Economic Summit



Potawatomi Ventures (PV) attended the Potawatomi Gathering Economic Summit on Aug. 1, 2025. Gun Lake Investments hosted this year's Summit. It was a great experience as we had the opportunity to visit Gun Lake's newly-renovated hotel which is a beautiful complement to their resort. During this year's economic summit, each of the 10 Potawatomi tribes had an opportunity to highlight their accomplishments and continued growth. Continued discussions surrounded around hopes of creating a combined business venture among all the Potawatomi Nations.

In attendance from the PV team was Board of Director's Chairwoman Crystal Deschinny, CEO Kip Ritchie, COO Jeff Johnson, CFO Paul Holesy, and Tribal Relations Director Heather VanZile. During PV update Deschinny highlighted the recent changes on the PV's BOD and Ritchie gave a great overview of PV's continued growth emphasizing on our recent acquisition of Lyon's Electric Company.

Ritchie said "I was encouraged by the Potawatomi Economic Summit and the urgency toward each band selecting a representative, meeting monthly and activating our collective strength to co-invest. Gun Lake Investment shared a white paper to that effect that outlines the concept and confident this will get the traction we need to make this a reality."

Greenfire Named Top Contractor July 14, 2025



Greenfire has been named a 2025 Top Contractor by Engineering News-Record (ENR) Midwest, ranking #62 among general contractors across the entire Midwest region. The annual Top Contractors list ranks firms based on construction contracting-specific revenue and includes both publicly and privately-held companies operating throughout the Midwest.

Greenfire earned this recognition through continued growth and performance across several market sectors. In 2024, Greenfire was recognized for having the highest certified construction spend as a minority-owned enterprise in the state of Wisconsin. Project work contributing to this achievement includes the Dairy Building renovation at the Wisconsin State Fair Park, renovations at the University of Wisconsin-Oshkosh, and kitchen upgrades at the Union Grove Veterans Affairs facility, among others.

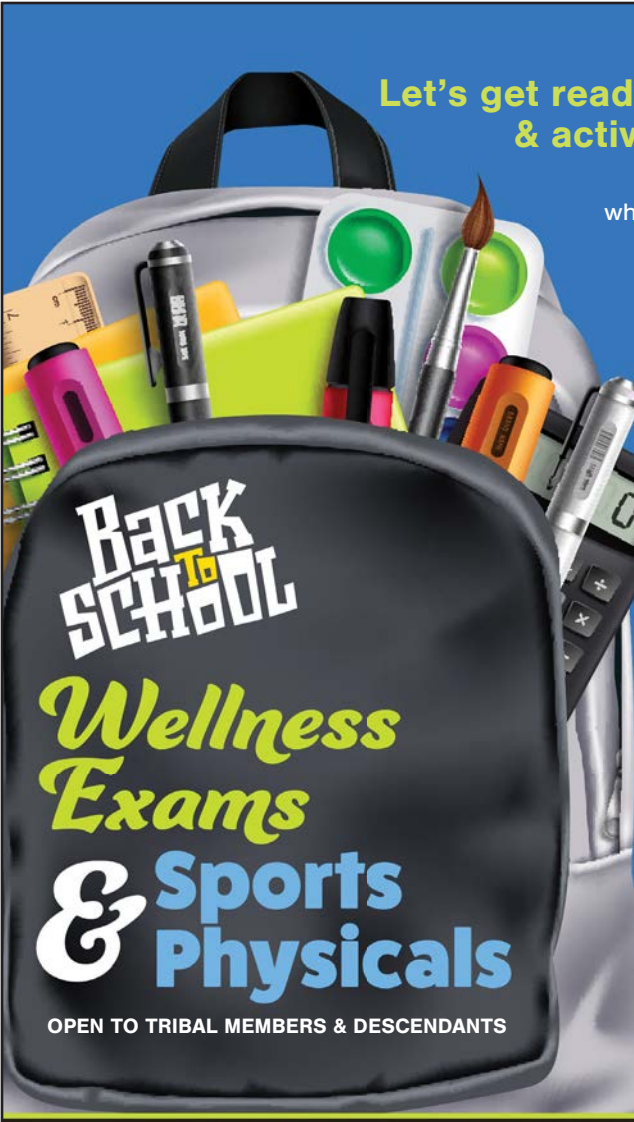
Greenfire continues to maintain a strong footprint in the multi-family construction sector. Ongoing and completed projects include: Rowe MKE along Milwaukee's East Side

riverfront, Village 43 in Brown Deer for F Street Development, and Landing at Hub City in Plymouth for Wangard Partners. Affordable housing projects like Jewish Family Services' Woodale Crossing in Brown Deer, Cardinal Capital's Cornerstone Village-Highland on Milwaukee's Near West

Side, and Ho-Chunk Nation's Cloud Village project in Baraboo round out Greenfire's diverse range of housing project types.

Beyond multi-family, Greenfire remains active in other construction sectors including tribal, commercial, healthcare, senior living, infrastructure, and hospitality throughout Wisconsin. These projects support a balanced portfolio and reinforce Greenfire's role as a full-service construction manager with the capacity to lead diverse and complex efforts across the state.

Greenfire adds value to every project through collaborative project planning and management, cost control, and field execution with the client's goals at the forefront. By focusing on communication, transparency, and long-term relationships with clients and subcontractors, Greenfire continues to deliver reliable results. Maintaining this standard of quality and service has helped Greenfire continue to earn recognition among the Midwest's top construction firms.



Let's get ready for a healthy & active school year!

Starting July 14, 2025 when children ages 4-18 complete a **Wellness Exam** or **Sports Physical** at the FCP Health & Wellness Center will receive either a back-to-school backpack with school supplies or a duffel bag with athletic items.

Don't delay!
All visits must be completed at FCP Health & Wellness Center after July 14, 2025. While supplies last.

Back To School
Wellness Exams & Sports Physicals
OPEN TO TRIBAL MEMBERS & DESCENDANTS

FOREST COUNTY POTAWATOMI HEALTH & WELLNESS CENTER
To schedule your appointments call **715-478-4300**

Limited to one backpack or duffel bag per child.



FCP Land & Natural Resources Division is hosting a screening of

BAD RIVER

September 5, 2025 - 5:30pm
Potawatomi Community Center
5471 Thayék Éthë Dnëkmëgzëk Myéw • Crandon, Wisconsin

In an effort to raise environmental awareness, FCP LNR encourages the community to attend and learn how the Bad River Band of Lake Superior's Chippewa have been fighting to protect Lake Superior for future generations.

**FREE-OF-CHARGE
OPEN TO EVERYONE**

FOREST COUNTY POTAWATOMI LAND & NATURAL RESOURCES DIVISION
For information contact
Outreach & Engagement Manager
Tyler Lorenz
715-478-4507 • Tyler.Lorenz@FCP-nsn.gov



fireside MARKET

Join us for an opportunity to try our "Fresh Food Fast", experience our new building in Slinger, and celebrate FCPC's role in bringing fireside MARKET to life.

On behalf of everyone at fireside MARKET and Potawatomi Ventures, we'd be honored to welcome you to fireside MARKET Slinger on August 18th. A ceremony will be held from 10-11am. Stay for a tour, lunch, and open house from 11am-2pm.

820 Hetzel Way, Slinger WI 53086
Event is open to FCPC Tribal Members.



Need a Ride?

FCP Transportation Services is available for scheduling rides* for doctor appointments, grocery shopping, work, and more. We are able to accommodate those with ADA needs!

Call 715-478-4779
7am – 5pm | Monday – Thursday
*Available on a first-come, first-served basis

Serving the Forest County Area
OPEN TO THE PUBLIC

FOREST COUNTY POTAWATOMI TRANSPORTATION SERVICES
Vision: To increase mobility and access to services, social gatherings, employment, and entertainment thus improving the economic, environmental and overall health of the community.

Elders' Pontoon Ride

photos submitted by Elder Services Coordinator Jenna Paradies



ELDER MEAL ROUTE

AUGUST 2025

| Sunday | Monday | Tuesday | Wednesday | Thursday | Friday | Saturday |
|--------|---|---|---|---|---|----------|
| | | | | | 1 Cobb Salad Fruit Milk Berry Wild Rice Popcorn | 2 |
| 3 | 4 Grilled Chicken Sandwich (LTO) Fruit Bean Salad Carrot + Celery Sticks | 5 Loaded Baked Potato Fruit Cottage Cheese Garden Veggie Salad Biscuit | 6 Meatloaf Fruit Corn Dinner Roll | 7 Lemon Pepper Cod Wild Rice Pilaf Roasted Sweet Potatoes Fruit | 8 Strawberry & Chicken Spinach Salad Fruit Fresh Baked Bread Yogurt Parfait | 9 |
| 10 | 11 BLT Sandwich Baked Beans Coleslaw Fruit Salad Milk | 12 Stuffed Peppers Fruit Cookie Milk | 13 Pizza Garden Salad Fruit Veggies + Dill Dip Milk | 14 Honey Garlic Salmon Potato Wedges Fruit Green Beans Dinner Roll Milk | 15 Taco Sald + corn & bean salsa Tortilla chips Fruit Yogurt Parfait Milk | 16 |
| 17 | 18 Tator Tot Casserole Broccoli Salad Fruit SF Jello Milk | 19 Beef & Broccoli Rice Fruit Veggies + Dip Milk | 20 Baked Chicken Cowboy Caviar Fruit Biscuit Milk | 21 Shrimp Alfredo Fruit Side Salad Milk | 22 Chicken Salad on croissant Carrots & Celery Bell Peppers Fruit Yogurt Parfait Milk | 23 |
| 24 | 25 Cheeseburger (LTO) Sweet Potato Wedges Veggies + Dill Dip Fruit Milk | 26 Tacos Fruit Milk Trail Mix | 27 Bison Kabobs w/ peppers, onions, potatoes Berry Wild Rice Fruit Milk | 28 Tuna Melt Fruit Cucumber Salad Milk | 29 Chef's Salad Fruit Dinner Roll Yogurt Parfait Milk | 30 |
| 31 | | | | | | |

The Daily Menu is subject to change without prior notice due, to inclement weather conditions, facility closures and other circumstances beyond our control. Thank you for your understanding and cooperation.

- FCP Sustainable Food Services Department

Community Events

AUGUST 2025

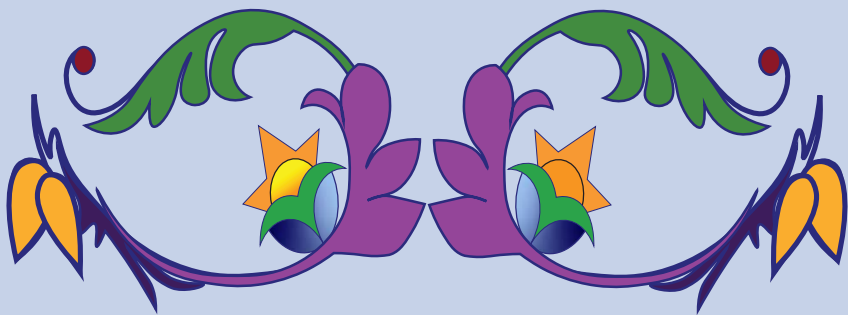


**FOREST COUNTY
POTAWATOMI**
Keeper of the Fire

| SUNDAY | MONDAY | TUESDAY | WEDNESDAY | THURSDAY | FRIDAY | SATURDAY |
|--|---|--|---|---|--|--|
| Recurring Weekly Events | | | | |  | 2 |
| Mondays: NA Meetings Recovery Resource Center 10am | Tuesdays: Powwow Club 4:30pm - 5:30pm | Wednesdays: Language Class 10am - 12pm Public Farm Walking Tour 1pm | Thursdays: Support Group Parenting Journey 12pm – 1pm | Fridays: Men’s Smudge Talk Recovery Resource Center 9am | | Potawatomi Gathering July 27th - August 2nd |
| 3 | 4 | 5 | 6 | 7 | 8 | 9 |
| | | | | Tribal Elder Food Box Distribution 12pm Nature Walks in a Changing Climate 1pm - 3pm | | Global Indigenous Youth Summit on Climate Change Virtual 11am - 7pm General Council Meeting 1 pm |
| 10 | 11 | 12 | 13 | 14 | 15 | 16 |
| | | | Summer Language Ages 12 - 17 3pm - 5pm Nature Walks in a Changing Climate 2pm - 4:30 pm | | Ice Cream Social & Kickball Cardinal Park Open to Everyone 1pm Fortunate Son CCR Tribute Live Entertainment Carter Casino 7:30pm | Spirit Warrior Run At the Farm 7am PRISS - All Female Kiss Tribute Live Entertainment Carter Casino 7:30pm |
| 17 | 18 | 19 | 20 | 21 | 22 | 23 |
| Rumours: Fleetwood Mac Tribute Live Entertainment Carter Casino 7:30pm | ATV Safety LNR Building 2pm - 5pm | ATV Safety LNR Building 2pm - 5:00pm Farm to Table 5:30pm | Parent Cafe - Topic: Sextorsion CC Classroom 5:30pm - 7pm | Tribal Elder Food Box Distribution 12pm Farm to Table 5:30pm | Meno Keno Ma Ge Wen Powwow Grand Entry 7pm | Meno Keno Ma Ge Wen Powwow Grand Entry 1pm & 7pm |
| 24 | 25 | 26 | 27 | 28 | 29 | 30 |
| Meno Keno Ma Ge Wen Powwow Grand Entry 12pm | | Elders Pontoon Ride - Boom Lake Hodag Park 10am Hunter’s Safety LNR Building 2pm - 5:30pm | Nutrition Taste Test H&W Test Kitchen 11am - 1pm CC Teaching Kitchen 11:30am - 1pm Safe Online Shopping Community Center 12pm Hunter’s Safety LNR Building 2pm - 5:30pm | Recovery Resource Center Open House 3pm - 7pm Nature Walks in a Changing Climate LNR Parking Lot 10am - 12:30pm Traditional Healing 9am - 2pm |  Downtown Crandon 12pm Family Day Silver Lake Beach 12pm - 3pm Traditional Healing 9am - 2pm |  |
| 31 | | | | | | |

POTAWATOMI WORDS

Answers will be in the next issue



Z I G L O S X S V X R E T H G U A D Y M K T G R
O N I E E T H I F Y O J N S A G H Z A I T X Z Y
E L E N X P H C K C Q W F O T V Z K V T D E A F
A K A S K V V K B P C F Q Z L I J N P I O B H B
I D H W K X J N T J Z G A Z T I G M C S E Z N D
N P A T F A H E Y V D A N A J Y V C G G G D X U
F K M T N D B S V A D M O B I N A E W O L S Y X
E H G E G B N S H P U J Y L K R X L L O S E D N
B T E Y N M I W H I T E C E D A R L E D K T A J
Z R S D O D T G V J I A H S E P N E W H J N P M
W O H A S A O I W Y H F Y F H R I B Z S O E L H
T F O J H M G W D N D G A B F T E I O K O W A P
Q D S Y K N P R Z E A R X Y I R G P A C E E E M
G N E B O A Z K T E M B I K A N E S E N N S O C
E A N Q S T P O W N T A A B E Z H E E D H R N G
T K L A H E C Z E I R E N W G I H T F M P E O Y
U C L F X K A W U I R E E M S N F O O R P S B C
L A I V H A G Y G B C G C D R L I W K O D O U C
F B H C G E S V I V O M Q N G B E M S Q Z O C X
S H G O B S Q Z B N B P V U A N H I M R N L K Q
B B I B P M B E W W Z E U V G D T Z S U Y S G D
C L B M C V D K T I E V Y N O I Q A D X H I W Z
C A I B X O A S O M E T H I N G S C A R Y T L T
A K J W J Y J I G T F S S E R T T A M D I I J M

- BBEGWEN**
FLUTE

WENPESH
FREE

NAM EDIT
DANCER

NBIGWNA
I BREAK IT

BAKSEN
IT IS OPEN

AYAZHOK
BACK AND FORTH

PESH MOWEN
MATTRESS
- GESHOSHEN**
IT IS LOOSE

MENDOWZET
EVIL ONE

ADMOBIN
CAR

MDAMNATEK
CORN COB

AZHGAS
OSHKOSH

YABE
BUCK

WENET
IT IS GOOD
- BEDO**
SOMETHING SCARY

YAKWNOGEWEN
SICKNESS

NANOKASHI
HUMMING BIRD

NDANES
MY DAUGHTER

PK WAKE
BIG HILL

GIZHKEY
WHITE CEDAR

ALL WORDS SOURCED FROM THE FCP POTAWATOMI DICTIONARY

Answers from previous issue

G L W J K F I R O Z F O L O S **THIRTYDAY** A B X A T O
E K A M Q U V H M E R Y R D L X B A J N F O D A W I K Z F F Q
J U Q M D K M B P M Z E Y L S C M V Z V E T V G C U I X C J A K
N U I S M M Z Y F O A C G H H P J F W O X K V V U I X V I J I
S P H G A A G I G M G E I G H T H M O N T H U T F D L Q Z J O
Y W F A H M S N S Q P R P E R I D O T B I R T H S T O N B T C
J D A J P M I I I C D J I W A S W T Z A S R E T S I S M O P E
W K D G G Y C C O R S P D V O O P T E X V X O H L I V E X L L
V C N F E L Y F W Q E Y I C D M G T F L H S S D J O Q Q L F W
X E I L E N I U J X H H L S E N E S H S L P I V P E T R E O A
R D U T A O L F R E E B T O O B A N H A K A Q M T E M O Q Y T
G R N J N D J Y L N F N O A H W L O S J E T J Z N Y H B I G E
M C A C Q L L Z I K D H X K K G K R E E T C Z O Y F C O P X R
Z C B K A K A I W C A L V U M I U O T I Q T N D K N H I B X M
E B P I M D H H C H Q F J A M M J O R U U E S H D E A Y F E
E L T M X P P S D C W Y C S S O K O O H D P A L W G J E S E L
F F H B X X Y F H K E F O Z E F E G T M C E I L M U I E F G O
T F N S J M Q T I K L O Y E C E S U A A S E L Q O E O G N
H A D R M X W K H R B X D W I Y R C C W M O A L T X Z P N Z
A W R N W S O E R D Z E O K H E T S H A A J T R R V I S C G
N R R Z F O C A P N I M N K V I A P Q G H T U Q O E R L O M
K V K E Z M L S J A F L W O M U L Y K F V O O N C O O B D O
L V D G O S Q X M G K L T L F G V S Z G H Y L J P W A K Z I G
M R E V U T G F O R U Y K S L S N D S Z E C Q H P Y X B P A F
R Q A N P F Z E R H M O A S H S D Y C L N K D F V L G W V G
L S D M Y I D G E S O B D O O I R G K Z N F G C L S T Q R R
J A M E F I N M S G A B V J Y C P G P E A T O U T S I D B J V
E T I W V Q D Z G S J U E C P Z I N V Q V U T A S S M Q H C D
U Y F R V I X O B F D A G K M W A D C K F B H S K N M G V U W
P Z Z Z B M B U P A I T R Z E Y V U Z S **WORLD PHOTO** N
Q E Y K G **POPPY AND GLADIOL** D H Z Y S D M G U E



What Can I Eat?

This is a program designed to help those with diabetes feel more confident that they can make healthy choices both at home and away from home.

2025 Class Dates
10:00 - 11:30am

- August 29
- September 5
- September 12
- September 19
- October 24

*Please be sure you are able to make it to every class!



Open to
FCP Tribal Members

8201 Mish ko swen Dr. • Crandon, WI 54520
Registration is required — Please call Community Health @ 715-478-4355.

Nē Mnobmadzēwen Myéwés (Pathway to Wellness) Mural Project

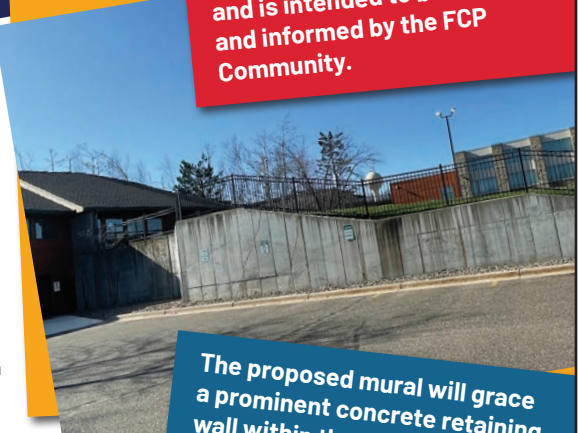
The mural project is a way to bring the community together and is intended to be designed and informed by the FCP Community.

FCP is one of five recipients of the GM on Main Street Grant! Powered by General Motors and Main Street America, the program awarded five grants to nonprofit organizations and municipal government entities near GM facilities and the FCP tribal community, within the Main Street network, was awarded to implement innovative transportation initiatives in their local districts.

The grant will support the installation of the Nē Mnobmadzēwen Myéwés (Pathway to Wellness) Mural Project, which aims to beautify the FCPC's Pathway to Wellness, a new bicycle and pedestrian trail set to be constructed in Forest County, Wisconsin.

This project is supported by the GM on Main Street Grant Program, presented by General Motors and Main Street America.

If you are interested in participating in the design or painting of the mural, please contact Michelle Berdan, Capital Projects Division, @ michelle.berdan@fcp-nsn.gov or 715-889-0186.



The proposed mural will grace a prominent concrete retaining wall within the government campus in Crandon, Wisconsin, near the main highway corridor, offering an expansive 800+ square feet of space for vibrant public art.



AUGUST 2025

| SUNDAY | MONDAY | TUESDAY | WEDNESDAY | THURSDAY | FRIDAY | SATURDAY |
|--|---|------------------------------------|----------------------------------|--|---|---|
| | <div><div>AUGUST 14-17</div><div>POTAWATOMI CARTER ALL-IN SUMMER SERIES</div><div>TICKETS ON SALE NOW</div><div>INFO & TICKETS AT GUEST SERVICES OR VISIT POTAWATOMI.COM/CARTER/ALLIN</div></div> | | | | <div>1</div> <div>CASH CARNIVAL</div> | <div>2</div> <div></div> |
| <div>3</div> <div></div> | <div>4</div> <div>5X POINTS</div> <div>MAX YOUR PLAY</div> | <div>5</div> <div>Let's Eat</div> | <div>6</div> <div>CLUB 50</div> | <div>7</div> <div>HOT SEATS</div> | <div>8</div> <div>CASH CARNIVAL</div> | <div>9</div> <div></div> |
| <div>10</div> <div></div> | <div>11</div> <div>5X POINTS</div> <div>MAX YOUR PLAY</div> | <div>12</div> <div>Let's Eat</div> | <div>13</div> <div>CLUB 50</div> | <div>14</div> <div>PANDORA'S BOX</div> <div>The Ultimate Aerosmith Tribute</div> | <div>15</div> <div>FORTUNATE SON</div> <div>Tribute To Creedence Clearwater Revival</div> | <div>16</div> <div>PRISS</div> <div>All Female Kiss Tribute</div> |
| <div>17</div> <div>RUMOURS</div> <div>The Ultimate Fleetwood Mac Tribute</div> | <div>18</div> <div>5X POINTS</div> <div>MAX YOUR PLAY</div> | <div>19</div> <div>Let's Eat</div> | <div>20</div> <div>CLUB 50</div> | <div>21</div> <div>HOT SEATS</div> | <div>22</div> <div>CASH CARNIVAL</div> | <div>23</div> <div></div> |
| <div>24</div> <div></div> | <div>25</div> <div>5X POINTS</div> <div>MAX YOUR PLAY</div> | <div>26</div> <div>Let's Eat</div> | <div>27</div> <div>CLUB 50</div> | <div>28</div> <div>HOT SEATS</div> | <div>29</div> <div>CASH CARNIVAL</div> | <div>30</div> <div></div> <div>31</div> |

CASH CARNIVAL

\$25,000 IN WINS!

FRIDAYS IN AUGUST

August 1, 8, 15, 22, and 29

WE CAN SEE BIG WINS IN YOUR FUTURE

FULL THROTTLE Fortune

SATURDAY, SEPT 27

DRAWING AT 10 P.M.

WIN A 2025 CAN-AM DEFENDER MAX LIMITED

START EARNING ENTRIES AUGUST 15

CASH DRAWINGS

LIVE ENTERTAINMENT

FREE FOR SPECTATORS

FENDERS & FLANNELS

Car Show

FIRST ANNUAL

First 100 to register will receive a dash plaque & goodie bag!

SUNDAY, SEPT. 14

SCAN FOR MORE INFO

PRE-REGISTRATION: \$10 | REGISTRATION DAY OF EVENT: \$15