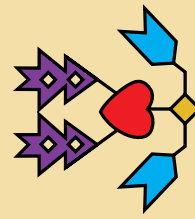


2017

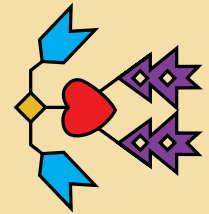
Annual Report



FOREST COUNTY POTAWATOMI
FOUNDATION



Our Mission



The mission of the Forest County Potawatomi Foundation is to fight poverty, promote economic opportunity, strengthen communities and provide an example of responsible citizenship by assisting charitable organizations and support the pursuit of education by offering scholarships.

*Photo courtesy of
Potawatomi
Traveling Times*

*All historical photos are courtesy of
FCP Cultural Center, Library & Museum
and the Lillian Kelty Collection.*

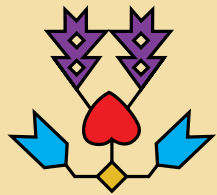
*Cover photo courtesy of
Potawatomi Traveling Times*

About the Foundation



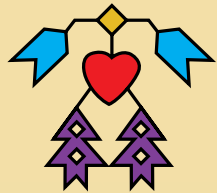
The FCP Foundation has operated in Milwaukee since 1999 with a commitment to provide funding support to charitable organizations for neighborhoods with very low and low-income residents. The Foundation is governed by the Forest County Potawatomi Executive Council and works directly under the supervision of the Executive Council to ensure transparency and maintain its commitment to the Milwaukee community as outlined in the resolution adopted by the Forest County Potawatomi Community on February 13, 1999.

The goals of the Foundation are to continue the Potawatomi tradition of sharing while protecting and preserving our cultural heritage, to support and enhance the image of the Potawatomi enterprises, and to maintain those commitments.

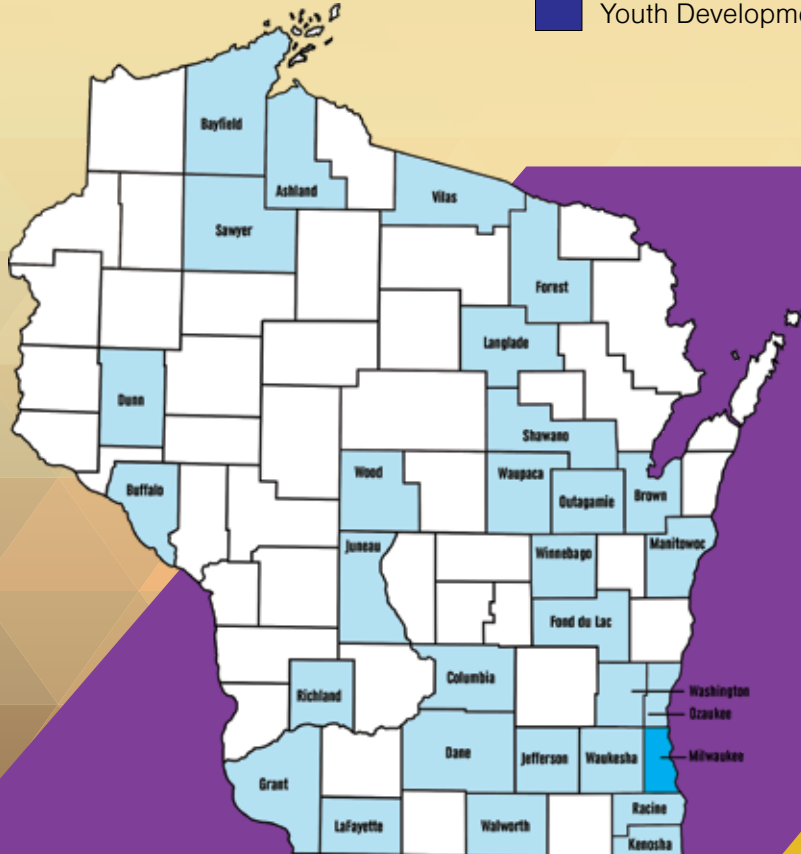
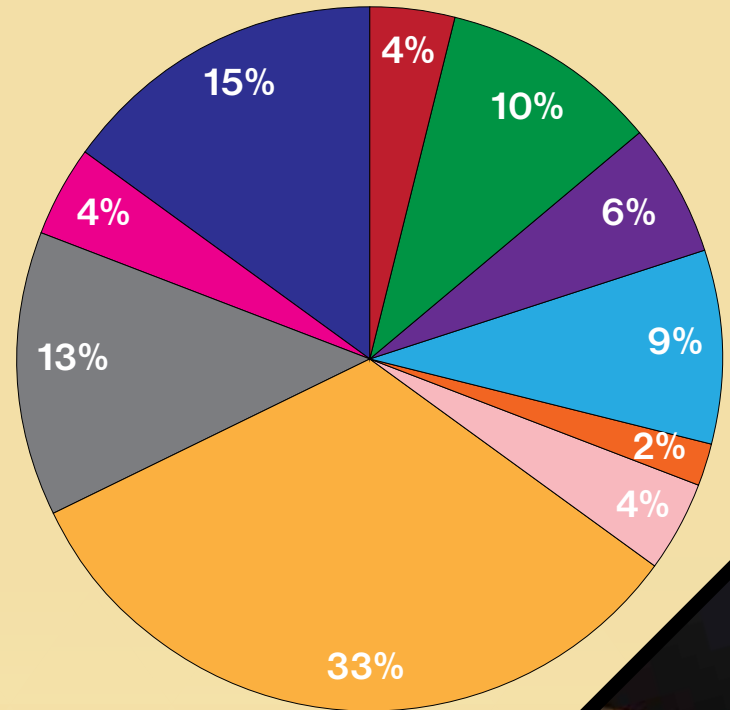


2017

Areas of Giving

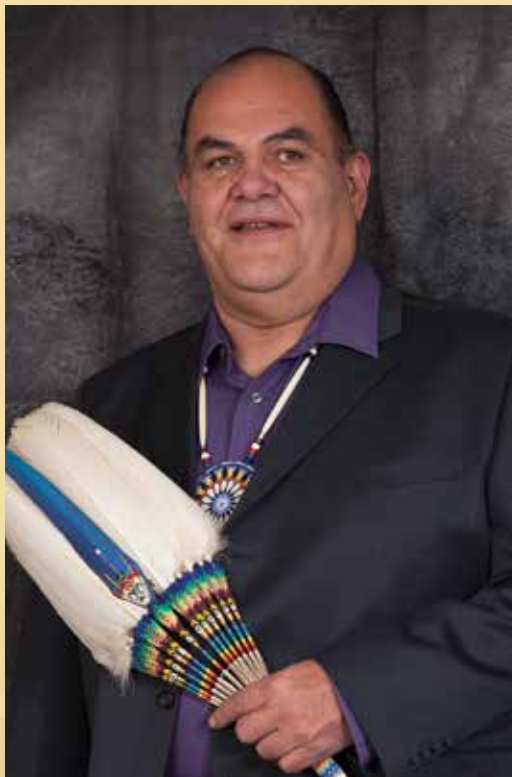


- Arts & Culture
- Civic & Community
- Economic Development
- Education
- Eldery
- Environmental
- Health & Human Services
- Native American
- Veterans
- Youth Development



Supported Areas of Wisconsin

Artwork by
Frank
Shepard



➤➤➤ Message from the Chairman

Milwaukee has been a part of the Forest County Potawatomi's history for well over a century. Generation after generation we have maintained our traditions, guided by a reverence for the lands we hunt on, a love for the families we are a part of, and a respect for the communities we live in. We are thankful for what we have. Every year we showcase our gratitude by giving back to the Milwaukee and Forest County communities through the Forest County Potawatomi Foundation.

There are many issues our communities are facing. The solutions to these problems may be difficult, but we must work towards a promising future by addressing these problems at present. For nearly a generation, the Forest County Potawatomi Community has been driven by a sense of responsibility — a moral obligation — to strengthen the communities that have helped us prosper.

The Forest County Potawatomi Foundation has given tens of millions of dollars to combat poverty, improve communities and make our

economy fairer for everybody. This Foundation, and the changes it has helped effectuate, represent our tribe's vision for tomorrow — a world that is better for those that follow in our footsteps.

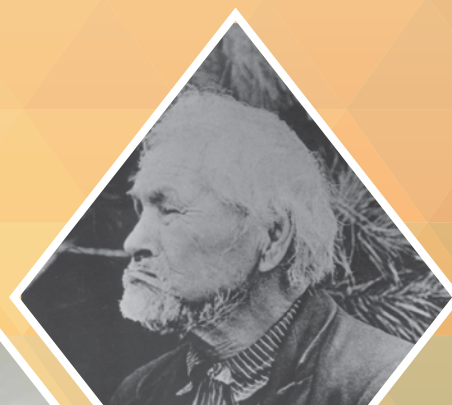
With these thoughts in mind, we are proud to present the Foundation's Annual Report. We hope for many more great years to come.

Respectfully,

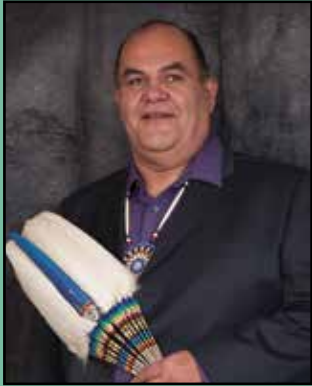
Ned Daniels, Jr.
Chairman, Forest County
Potawatomi Community



Artwork by
Reddmen
Lemieux



➤➤➤ FCP Executive Council ➤➤➤



Ned Daniels, Jr.
Chairman



Brenda Shopodock
Vice Chairwoman



Joseph Daniels, Sr.
Treasurer



James A. Crawford
Secretary



Brooks Boyd
Council Member



Nickolas Shepard, Sr.
Council Member

➤➤➤ FCP Foundation Staff ➤➤➤

Kaye Garcia, Executive Director
Noemi Figueroa, Foundation Assistant

3136 W. Kilbourn Avenue, Suite 300
Milwaukee, Wisconsin 53208
(414) 837-3413

➤➤➤ Advisory Committee ➤➤➤

The Advisory Committee of the Forest County Potawatomi Foundation provides advice and counsel on matters important to help the Foundation meet its mission by assisting in the evaluation of grant requests to help determine those requests that appear to most merit support and assist in developing the standard for grants. Members of the Advisory Committee have attained prominence in their respective careers and were chosen because of their value in providing sound advice and counsel.

Kip Ritchie, Board Chair
Greenfire Management Services

Harold "Gus" Frank
Forest County Potawatomi Community

Timothy McMurtry
Milwaukee Area Workforce Funding Alliance

Faithe Colas
Salvation Army of Milwaukee County

Eloisa Gómez
UW Extension – Milwaukee County

Jacqueline Schram
Marquette University Office of Public Affairs

Don Cohen
Landmark Credit Union





Arts & Culture



Waukesha Community Arts Project

Waukesha Community Arts Project holds after school arts classes in visual arts, creative writing, drama, and dance for over 300 middle school students per year at no cost to their families.

Photo courtesy of Nancy Aycock



Artwork by
Mikaya Alloway

It is essential to the Foundation to support programs that focus on the creativity of the visual and performing arts. These programs encourage, preserve the expression of cultural values, and have a positive effect on everyone, young and old, by inspiring the imagination, building self-confidence and increasing the capacity for knowledge.



TBEY Arts Center, Inc.

After-school arts and art reach programs provide youth with the opportunity to explore the arts, perform, connect with peers and artist educators, and develop leadership skills.

Photo courtesy of TBEY Arts Center, Inc.

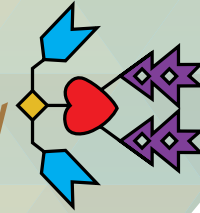


Xalaat Africa Drum and Dance for Life

Xalaat Africa's summer program allows students to explore the African culture through history, music, and dance.

Photo courtesy of Laura White

Civic & Community



There are many organizations that address the most critical and specific needs in our communities. They provide guidance, awareness, advocacy, research opportunities, education, public service, disaster relief, public health awareness, combat homelessness and aid in hunger relief. Support helps these organizations to ease pain and suffering, provide comfort to those they serve, and help make our communities a better place to live, work and play.



Project RETURN

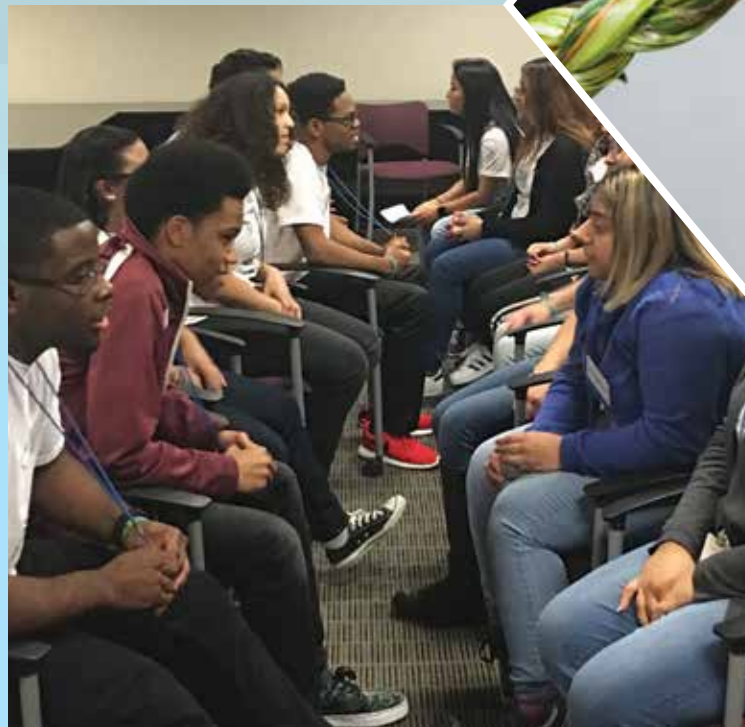
Project RETURN's Ex-Offender Employment Program works to reduce barriers to successful re-entry into the workforce.

Photo courtesy of Project RETURN

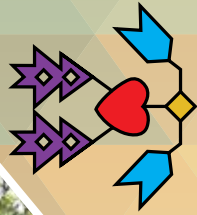
Safe & Sound

Safe & Sound's Face-to-Face workshop encourages conversation regarding humanity and civility in our community despite differences in age, race, occupation, ethnicity, socioeconomic status or geography and fosters the self-awareness necessary to make changes.

Photo courtesy of Sarah Flaschberger



*Photo by
Potawatomi
Traveling Times*



Economic Development

Economic development boosts economic growth, advances professional development, increases learning outcomes in reading, writing and mathematics, as well as interest and learning outcomes in science and social responsibility. Funding assists with special programming and activities geared towards improving the community by offering business opportunities, affordable housing, job training and employment for youth and adults.

STEP Industries

STEP Industries provides job-readiness training to an exclusive population of men and women in recovery from substance use disorder. The training helps people feel secure in their recovery and eventually find economically- independent lives.

Photo courtesy of STEP Industries



Photo by
Potawatomi
Traveling Times

Artwork by
Janiece
Brown



Public Allies - Milwaukee

Career Pathways program equips young people who face systemic barriers to employment by providing full-time, paid apprenticeships that give hands-on professional skill-building and a strong foundation in values-based leadership.

Photo courtesy of Public Allies - Milwaukee



Education

Funding in education helps to implement or improve literacy programs, provide higher education opportunities, early childhood education and development, mentoring, literacy and job training. A strong focus of these organizations is on underserved groups and those that are economically disadvantaged.

Literacy Services of Wisconsin

Literacy Services of Wisconsin Workforce Readiness Initiative 2.0 helps remedy the effects of low literacy rates and high unemployment rates among disadvantaged adults by providing opportunities to develop skills through proven, cost-effective, one-on-one instruction.

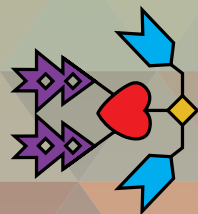
Photo courtesy of Sara Risley



Adult Learning Center

The Adult Learning Center transforms lives through education. In addition to helping motivated adults receive their GED certificates, its programs help the students gain the social skills, confidence and dignity needed to become productive and responsible workers and citizens.

Photo courtesy of Alicia Donner



Education >>>> Scholarships



To allow deserving students to attain their educational goals, meet their professional objectives and succeed to their fullest potential.

The Forest County Potawatomi Scholarship Program was created because of the overwhelming need found throughout our Wisconsin community. It is the most unique due to the mixture of scholarships available.

The **Chief Simon Kahquados Scholarship** is awarded to a Wisconsin resident & student with at least one year of coursework (24 credits) from an accredited college or university and is seeking to transfer as a full-time student at an accredited Wisconsin college or university. The recipient receives a one-time scholarship disbursement for the academic year.

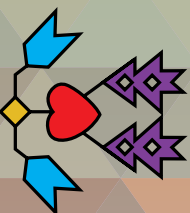
The **Delores Pemma Scholarship** is awarded to a Wisconsin resident seeking to enroll or currently accepted as a first-year, full-time or part-time degree-seeking student at an accredited Wisconsin technical school or college. The recipient receives a scholarship disbursement per semester for a maximum of two years.

The **Lois Crowe Scholarship** is awarded to a Wisconsin high school senior seeking to enroll or currently accepted as a full-time, first-year undergraduate student at an accredited Wisconsin university or college. Scholarship disbursement is awarded once each semester for a maximum of four years. Semester renewal is based on academic performance and student must provide academic documents to the Foundation.



Artwork by
Alexis Houle

Elderly



We are heartened by the dedication of those that work and care for our older adults. We honor and support those programs whose work enriches the quality of life, help combat loneliness and promote good health for our elders.



United Community Center

United Community Center's (UCC) Adult Nutrition Program is vital to the health and overall well-being of an extremely vulnerable and underserved elderly population. In addition to a healthy meal, participants benefit from nutrition education and UCC Senior Center activities.

Photo courtesy of Jill Sanchez

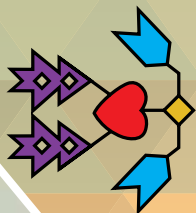
ERAs Senior Network

ERAs Senior Network's Intergenerational Folk Art Fair involve community elders who volunteer their time, and share exhibits that feature collections, hobbies, and trades of the past.

Photo courtesy of Anna Roesel



*Photo by
Potawatomi
Traveling Times*



Environmental

Supporting environmental programs help to restore and protect our waters, urban agriculture, outdoor recreation, education, tourism, forestry and wildlife, and the overall quality of life. Environmental awareness is a rewarding and enriching learning opportunity for our children.



Photo by
Potawatomi
Traveling
Times

Urban Ecology Center

Summer camp at the Urban Ecology Center combines outdoor adventure with the benefits of science-based learning to help curb summer learning loss.

Photo courtesy of Victoria Bahe



Highland Community School

Highland Community School's Urban Agriculture Program teaches students how to grow food and prepare healthy meals using fresh produce. Students plant and grow produce and herbs in outdoor hoop houses and indoor hydroponics systems.

Photo courtesy of Little Giant Photography

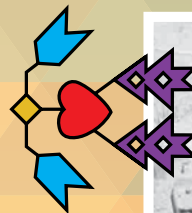


Wisconsin Wetlands Association

The Tribal Wetlands Working Group Conference uses coordination, collaboration, and field-based learning to help increase the ability of the wetland programs of the tribes in Wisconsin to meet their wetland needs. *Photo courtesy of Monika Blazs*



Health & Human Services



Grants in this area are geared towards assisting organizations whose mission is to provide prevention, protection and supportive services for those in our communities. Some may offer services for addiction, mental health, free medical care, behavioral health, education awareness and prevention of child abuse.



Repairers of the Breach

The programming offered at Repairers of the Breach is vital to the mission of creating a supportive community that offers Milwaukee's homeless men and women the resources they need to change the present conditions under which they are currently living.

Photo courtesy of ROTB Communications & Fund Development Committee



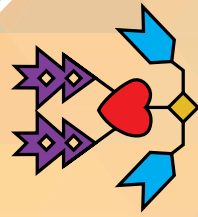
Artwork
by Isabella
Daniels



Serenity Inns

Serenity Inns continues to meet the need for addiction recovery by serving men who are most at risk and provides the only residential treatment facility in Milwaukee that doesn't require insurance or the ability to pay.

Photo courtesy of Serenity Inns



Native American

Special consideration of grants are given to Native American organizations for their focused initiatives. These may include the arts, cultural teachings, spiritual guidance, economic advancement, education, environmental awareness, health and wellness, capacity building and leadership.



American Indian Cancer Foundation

American Indian Cancer Foundation shares education and resources on cancer prevention and screening at the "Gathering of American Indian Veterans" event.

Photo courtesy of American Indian Cancer Foundation

*Photo by
Potawatomi
Traveling Times*



Gerald L. Ignace Indian Health Center

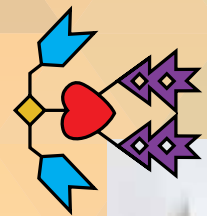
The Gerald L. Ignace Indian Health Center's Youth Empowerment Program collaborated for the 2nd Annual Native Beats for Life Suicide Prevention with a special presentation that focused on verbal defense tactics to stand up to bullying and worked with youth on demonstrations to build confidence and strengthen self-esteem.

Photo courtesy of Maurice Smith





Veterans



Supporting veteran organizations is our commitment to help them help those that have served our country. Programs range from art therapy, homelessness, job placement, preparation for re-entry back into the work force, mental health and substance abuse services, educational classes, veteran benefits assistance, and peer support.



Photo by Potawatomi
Traveling Times

Innovative Educational Solutions Institute

Innovative Educational Solutions Institute skill-set training program for Veterans

Photo courtesy of George Garland



Artists for the Humanities

Artists for the Humanities expressive art therapy and mental health-counseling program at Vets Place Central in Milwaukee

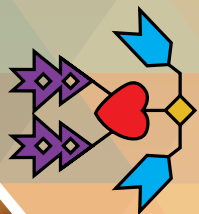
Photo courtesy of Tim Mayer



Wisconsin American Legion Foundation

Forest County Potawatomi Community Flag in the Wisconsin Legion Veteran's Service Office in Milwaukee.

Photo courtesy of Wisconsin American Legion Foundation



Youth Development

Funding support helps organizations that deliver after-school programs, community-based activities, programming that focuses on the essentials of well-being and healthy development. Our goal is to support positive youth development, which will better prepare our children for challenges they may face as they move through their adolescence and into adulthood.



Photo by
Potawatomi
Traveling Times

All Hands Boatworks

All Hands Boatworks R.A.F.T. (Real Apprenticeships For Teens) program; dozens of Milwaukee's teen youth participated in RiverVentures Camp on the Menomonee River, worked as summer interns, or regularly attended the after-school program where they are in the midst of building a 22' rowing skiff.

Photo courtesy of All Hands Boatworks





Dream Bikes

Dream Bikes is an organization that utilizes bicycle donations as an opportunity to teach bicycle mechanics, retail, and small business skills to youth ages 14 to 21.

Photo courtesy of Ashley Parker



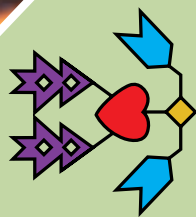
Artwork by
Naganwedek
Daniels



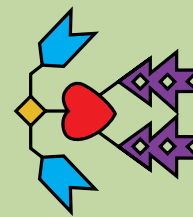
Our Next Generation

Our Next Generation's Community Learners Programs ignite learning and encourages personal growth and positive development to inner-city youth.

Photo courtesy of Our Next Generation



2017 *Charities*



Ace Boxing Club
ACTS Community Development Corporation
Adullam Outreach Incorporated
Adult Learning Center
AIDS Resource Center of Wisconsin
All Hands Boatworks
Alma Center
American Indian Cancer Foundation
American Indian College Fund
American National Red Cross
Artists for the Humanities
Audio & Braille Literacy Enhancement

Bad River Band of Lake Superior Tribe of Chippewa Indians
Bread of Healing Clinic

Casa Guadalupe Education Center
Cathedral Center
Center for Deaf-Blind Persons
Center for Veterans Issues
City of Light Community Development Corporation
Columbia St Mary's Foundation
CommonGround Ministry
Community Advocates
CORE/EI Centro
Cristo Rey Jesuit Milwaukee High School

Daystar, Inc.
Dream Bikes

Eco-Justice Center
End Domestic Abuse Wisconsin
Epic Center Community Organization
Episcopal Diocese of Milwaukee
ERAs Senior Network - Interfaith Senior Programs
Exploit No More
Express Yourself Milwaukee

Feeding America Eastern Wisconsin
Fondy Food Center
Forward Learning Youth and Young Adults
Foundation of the Wisconsin Automobile & Truck Dealers Association
Franciscan Peacemakers
Fresh Coast Classic

Gathering Waters
Gerald L. Ignace Indian Health Center
Great Lakes Hemophilia Foundation
Great Lakes Inter-Tribal Council
Great Lakes Lifeways Institute
Great Lakes Native American Elders Association
Guest House of Milwaukee

Haskell Foundation
Highland Community School
Historic Concordia Neighbors
Hmong American Friendship Association
Holton Street Clinic
Hope Center
Hope House of Milwaukee
Hunger Task Force

Indian Council of the Elderly
Indian Summer
Indian Youth of America
Innovative Educational Solutions Institute
Interfaith Action of Greater Saint Paul
Interfaith Older Adult Programs

King Advisory, Inc.

La Casa de Esperanza
La Causa
Lead2Change
Legacy Redevelopment Corporation
Literacy Services of Wisconsin

Marcus Center for the Performing Arts
Medical College of Wisconsin
Mequon Nature Preserve
Midwest Indian Mission
Milwaukee Center for Children and Youth
Milwaukee Habitat for Humanity
Milwaukee Homeless Veterans Initiative
Milwaukee Kickers Soccer Club
Milwaukee Riverkeeper
Milwaukee Urban League

National Association of Tribal Historic
Preservation Officers
Native American Church of Wisconsin

Nehemiah Project
Neighborhood House of Milwaukee
New Beginnings are Possible
New Concept Self Development Center
New Mexico Community Capital
NewThreads of Hope

Operation DREAM
Operation Impact - District 2
Our Next Generation
Outreach Community Health Centers

Pathfinders Milwaukee
Pathkeepers for Indigenous Knowledge
Philippine Cultural & Civic Center
Foundation
Planned Parenthood of Wisconsin
Project Return
Public Allies Milwaukee

Racine Interfaith Coalition
Rawhide
Red Cliff Band of Lake Superior
Chippewa Indians
Repairers of the Breach
Revitalize Milwaukee
Rock Valley Community Programs
Running Rebels Community Organization

Safe & Sound
Salvation Army Services
Serenity Inns
Sharing Center
Social Development Foundation
St Catherine Residence
St Joseph's Medical Clinic
Step Industries
Summit Educational Association

TBEY Arts Center, Inc.
Three Fires Ojibwe Culture and Education
Society
Tippecanoe Presbyterian Church USA

UEC/MVP Project
United Community Center
United Indians of Milwaukee
Urban Ecology Center
Urban Economic Development Association

Veterans Employment Alliance
Vision Forward Association
Voces De La Frontera

Waukesha Community Art Project
Wisconsin American Legion Foundation
Wisconsin Ovarian Cancer Alliance
Wisconsin Regional Training Partnership
Wisconsin Wetlands Association
Wisconsin Women's Business Initiative
Corporation
Wiscraft, Inc.
Women's Center

Xalaat Africa Drum and Dance
for Life

YWCA Southeast
Wisconsin

Beadwork by
Dennie Shepard





FOREST COUNTY POTAWATOMI
FOUNDATION